

LINO-SELF PORTRAIT

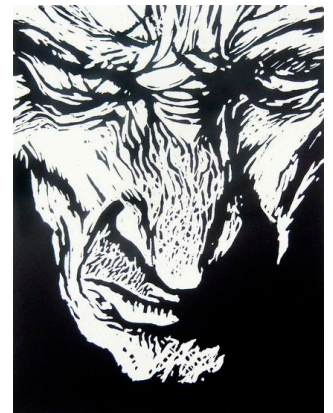
You are going to take a digital photo of yourself, manipulate it on the computer, print it out and trace it on a lino piece to create self-portrait prints.

1-DRAFTS

PAGE 1- RESEARCH-Check the following printmaker artists:

- Albrecht Durer & Kathe Kollwitz
- Andy Warhol (see Warhol's Marilyn silk screen prints)

Resource: <http://www.hcporter.com> "Environmental Portraits" - Silkscreen prints. High contrast photographs - printed in black and hand painted with acrylics. Jackson, Mississippi artist



PAGE 2- COMPOSITION- ELEMENTS AND PRINCIPLES OF DESIGN-

Take several digital photos of yourself, keeping in mind, light source, you want lots of contrast, so maybe have a light light-up one side of your face. Think of point of view; the angle that you take the picture from. Also, consider your expression & crop your photo. We do not need to see your whole face to know who you are. A portrait of you looking straight forward is not as interesting as you making a face or seeing only part of your face.

Upload all these photos, (you should have 10 or more) on one page on a word document.

Print it and glue it in your sketchbook.

PAGE 3- IDEA GENERATION- On this page you are going to print and glue your original photo and the high contrast photo that you created on the computer. Follow these steps

1. Upload your photo to any photo editing program Picnic and Picasa are both good.
2. I use word, select the picture, click on format, click on correction on the top bar, at SHARPEN/SOFTEN, I select the top right option.
3. Then I go to color and change it to BLACK & WHITE.
4. Then I go to ARTISTIC EFFECT and scroll down to the second last one PHOTOCOPY or third last one CUTOUT.
5. Print the original and this altered photo out in the size of an 8X8 linoleum block.



PAGE 4- EXPERIMENT WITH MATERIAL



- Consider the methods and materials used by lino artists and how results were accomplished.
- NOTE: You will be using different methods than Warhol, who used silk screen printing. However the outcome will be very similar.
- On a piece of 2X2 scrap lino, create a simple image with at least one black line (rose stem) and some radiating texture going from dark to light (like around the rose)

2- Have your draft approved and marked before drawing on the copy copy lino.

3-Good Copy

- Transfer the image onto the block. All of the areas to be inked and not carved, should be colored in using a black sharpie.
- Print a clear block with no carving for a background color, using colored paper, or continue to use white paper.
- Make sure you create contrast between your face and the background!!!!
- Keep a 1 inch border around each print
- If a clear block is printed first for a background color, first allow it to dry and then register the print properly. (In printmaking, registration is the proper positioning of plates or colors.)
- Create one excellent black and white print.
- You can mix ink to get custom colors or use the colors in the tube.
- Create 3 excellent prints of your color choice and label them as shown below
- Cut 4 window mat for your prints and mount them.



¼

silly me

Jane Doe

Edition # (first print of 4)

Title centered

your Name

The placement is super important, and should not go past edges of image.

Your name can be signed. Use a sharp pencil

4- Upload **picture** of the 4 mounted prints on EDMODO

5-Type your **WRITE UP** on EDMODO- Make sure you address the following:

Which element and principles of design did you use to enhance your image?

